

**REPUBLIC OF AZERBAIJAN**

*On the rights of the manuscript*

**ABSTRACT**

of the dissertation for the degree of Doctor of Science

**INVARIANT MODELS AND VARIATIVITY OF SIMPLE  
SENTENCES IN MODERN ENGLISH**

Speciality: 5708.01 – German languages

Field of science: Philology

Applicant: **Farida Mahammadali Allahverdiyeva**

**Baku – 2021**

The work was performed at Department of Indian-European Languages at the Institute of Linguistics named after Nasimi of ANAS.

Scientific advisor: Doctor of Philological Sciences, Professor  
**Ilham Mikayil Tahirov**

Official opponents: Doctor of Philological Sciences, Professor  
**Masmakhanum Yusif Qaziyeva**

Doctor of Philological Sciences, Professor  
**Farman Husan Zeynalov**

Doctor of Philological Sciences, Associate  
Professor  
**Rena Teymur Safaraliyeva**

Doctor of Philological Sciences  
**Parviz Yasinali Aghayev**

Dissertation council ED 2.12 of Supreme Attestation Commission under the President of the Republic of Azerbaijan operating at Azerbaijan University of Languages.

Chairman of the  
Dissertation council: \_\_\_\_\_ Doctor of Philological Sciences,  
academic  
**Kamal Mehdi Abdullayev**

Scientific secretary of the  
Dissertation council: \_\_\_\_\_ Doctor of Philosophy on Philology,  
Associate Professor  
**Irada Nadir Sardarova**

Chairman of the scientific  
seminar: \_\_\_\_\_ Doctor of Philological Sciences,  
Professor  
**Faxraddin Yadigar Veysalli**

## GENERAL CHARACTERISTICS OF THE WORK

### **Urgency of the theme and the degree of research.**

Variability, variance is observed at all levels of the language as a universal feature of language means. One of the key features for the contemporary linguistic research is to focus a spotlight on the issues concerning the general typology of variability of language means and functional specifications of various variants in the text. In contrast to other levels of language, the problem of variability in syntax has not been extensively studied. The complexity of the investigation of variability in syntax is conditioned by the dual nature of syntactic units, and their structure and content layout. The sentence as a syntactic unit changes its structural and content layout and functional aspect in the evolutionary process. Simple sentence as a generally accepted communicative speech and syntactic unit has been widely studied in various aspects in modern linguistic studies and currently is being studied further. Simple sentence, as one of the structural types of sentence, had a long way of development in modern English as well like in other languages, and has come to the present situation having structural-semantic improvement through certain changes word order as a result of simplification in sentence models, means of expression in sentences.

Up to now, there has been no comprehensive description of the variability features of all syntactic models of simple sentences in the studies where the syntactic structure of the English language has been analyzed. Still, structural-semantic features, variations emerged in the historical development process can be underlined as an important issue because of the controversial issues in the syntax with a simple sentence and this proves the urgency of the theme. All of these bring to the agenda the comparisons by analyzing the structure-semantic layout of the simple sentence in different periods of the English language, revealing the changes in the simple sentence models, sentence members and their means of expression, word order, analyzing the causes of those changes as an actual linguo-methodological issue.

Many researchers (K.Abdullayev, S.Abdullayev, D.Yunusov, F.Veysalli and others) have studied the problem of variability in different types of sentences in Azerbaijani linguistics and have shown valuable works in this area. The term “variability” is applied to describe the functionality of different language units in modern linguistics and to discover its unobserved aspects. In recent decades, the concept of enhanced variability in phonology has also contributed to extensive research in other areas of linguistics, including syntax.

During syntactic studies in modern linguistics the sentence is approached from structural, pragmatic, communicative, and other positions. The interest in structural transformation of the sentence, its paradigms plays an important role in modern grammatical and syntactic studies. Such attempts are explained by the fact that in modern linguistics the key focus is oriented towards the dynamic side of the language. All of these actualizes analysis of similar syntactic structures, invariant models and model variations of simple sentence, their minimal and maximum limits on the basis of modern English language materials and theories reflected in the current linguistic literature, evaluation of the obtained results and conclusions from the point of view of foreign language teaching methodology.

Theoretical basis of study consists of scientific and theoretical studies, ideas and considerations of foreign and country linguists – E.Koseriu, L.Tenyer, U.Cheyf, N.Khomski, Z.Harris, O.Yespersen, J.Layons, A.M.Mukhin, A.I.Smirnitski, V.M.Solntsev, B.A.Ilish, V.V.Rastorguyeva, N.A.Slusareva, K.Brunner, V.G.Gak, G.Glison, V.A.Zveginsev, K.Abdullayev, A.Rajabli, S.Abdullayev, F.Veysalli, A.Mammadov, D.Yunusov and others, concerning the grammatical and syntactical structure, communicative, functional, semantic, comparative syntax of various languages, including English, its history, universal and transformational-generative grammar, actual division of sentence, text syntax and so on.

**The object and subject of the research.** The object of the study are the structural types of simple sentences in modern English.

The subject of research is identification of the invariant models and variability of the simple sentence in modern English.

**Aims and objectives of the research.** The main purpose of the research is to define various variative, paradigmatic, derivative, synonymic and transformational variations and invariant models that occur in the structure of the simple sentence based on modern English language materials, to interpret the reasons for the changes in the structure of the simple sentence in the background of changes in the historical development periods of the English language, to underline the basis of variability as a general feature in the case of change in the sentence and its semantic structures, to determine the reasons for the transformation and paradigmatic relationships of simple sentences from a syntactical point of view.

To achieve this goal, attention is paid to addressing the following tasks:

- to study the typical structural and semantic characteristics of simple sentences in separate historical development periods of English;

- to reveal changes emerged in typical simple sentence models for middle and early new English language eras;

- elucidate at changes in sentence members and their means of expression in simple sentence structures during separate historical period of development of English;

- to define syntactic versions of simple sentences and their types in modern English;

- to reveal the main factors that make the variability of simple sentences in English;

- to attempt to give a systematic semantic-syntactic description of the basic invariant models of simple sentences in modern English;

- to attempt to create a typology of simple sentences in the modern English based on critical analysis of scientific and theoretical literature;

- to reveal the syntactic paradigms for simple sentence models in English;

- to consider syntactic derivation in similar syntactic structures of simple sentence in English;

- to review simple sentences in English based on different linguistic analysis models (transformation, transmitter or derivative);

- to give a description of the development models of sentence members in the structure of simple sentences in English;
- specify the variative nature of the intonation structure and speech intonation of simple sentences in English;
- to explore the constants and variability issues in the intonation structure from the experimental point of view;
- to clarify the formal and functional aspects of the intonation of simple sentences in English.

**The research methods.** General linguistic analysis methods have been used in the study as an impact and comparison. Techniques and methods such as the definition analysis, component analysis, transformation, contextual analysis, and modeling have been applied in the analysis of actual language material. The scientific and theoretical sources concerning the subject of the study have been referred to. The actual language material has been selected from contemporary English and American literature.

**The main provisions for defense are:**

1. The analysis of the structure of simple sentences in modern English allows to come to the conclusion that verb and noun structure of the simple sentence can be countered. Verb structural types are dominated in English as well as in other languages;
2. Predictive relationships with subject-object and predictive categories are crucial in determining the essence of sentence members in the structural types of simple sentences in English;
3. In simple sentence models through the stages of historical development of English, structural-semantic expansion develops and secondary members are formed along with the evolution of subject-predicate relationships. Comparing invariant models of the simple sentences provides the reason to say that apparently, an object relation essentially closer to predicatively has emerged after that. The object relation determines gynecological basis of the semio-grammatical associations between the predicate and complement in the simple sentence structure. In the structure-semantic expansion of the simple sentence, an attributive relation is formed after a subject-predicate and object relations, and this is characterized by the nominative expression of the relationship between subject and object

in English. This phenomenon, shown itself in the structural-semantic expansion of a simple sentence in English, also can be considered as a typological event, because predicative, object, attributive relations are historically follow each other in all languages;

4. Formation of a simple sentence in English, as well as its constituent elements, is a complex process. The following are important for the formation of structural-semantic components of a simple sentence: 1) syntactic position of sentence components; 2) categorical-lexical attitude of this position; 3) interrelation of lexical and syntactic semantics;

5. The conditional use of generally accepted terms, such as “subject // subject”, “predicate // predicate”, “object // object”, “predicativity”, “variance”, “variation” and etc. is supported by the fact the essence of the notions expressed by them is determined in accordance with the grammatical features of a specific languages, namely English, as the language under car investigation.;

6. In language units, variance and invariance are considered an objective category. The concept of variability belongs to all levels of the language structure. Variativity is a process that makes itself look more brilliant in a position in contact with each other and in a distant position;

7. The variability of different levels of language is regulated by systematic laws and intra-structured variativity, covering the variants of position, combinator, and distribution is opposed to variativity, which is conditioned by social factors. Variants are sometimes interpreted as changing the shape of the language units, which are conditioned by context and condition, and which allow them to be realized in that functional system;

8. The intonation variativity helps to solve variativity in language problem. Constantness and variativity are considered to be the main features of the language structure. The language without them can neither exist nor develop. Constantness and variativity are manifested in accordance with the specifications of language units at all aspects and levels of language;

9. The sentence expresses the completed thought, it consists of one or more syntactic groups that they are normally observed in the

end with declining tone. If the syntactic structure of the sentence is associated with the consciousness of the speaker in the traditional form, the syntax is understood from this point of view as an independent element of speech. Inter-component syntactic membership is characterized by its continuity.

**Scientific novelty of the research work.** Scientific novelty of research shows itself in the logical-communicative aspect and formulation of regularity of the narrative and the simple sentence syntax, which is conditioned by incomprehensive study of simple sentence problem in English. In research, in the simple sentence structure, the paradigmatic and partly syntagmatic relationships of the main verb are investigated from their syntactic positions. For the first time, invariant models of the simple sentence in modern English (SP model, SPO sentence model, SPC sentence model) and modifications and changes in those models have been studied in the research, and compatibility of those models to the same synthetic structures functioning in different periods of English is considered. Development of variability problem in similar syntactic structures, linguistic model, generating models, transformation models, the development models of sentence members, modeling of modal verbs in simple sentence types, variative nature of speech intonation have been studied and experimental-phonetic analysis of speech intonation in simple sentence models are carried out.

**Theoretical and practical significance of the research.** The analysis of the simple sentence structure generally contributes to the theoretical study of Germanic language, including the modern English syntax. Material used in the research and its analysis are important in terms of clarifying issues in the study of Germanic Language studies, a number of issues in simple English syntax, for example, the relationship between the simple sentence invariant models and the variability in those models with the language development patterns, defining the structure-grammatical and communicative semantics of sentence members, revealing optimal nuclear models of simple sentence and in general, can be useful in enriching the theoretical idea of the structure of the sentence and the semantics of its components. In the dissertation, a simple sentence



model of variability in terms of modeling, an experimental analysis of the variational nature of speech in a simple sentence and its results, analysis of similar syntactic structures can be useful from theoretical and practical points of view in other languages.

Simple sentence invariant models as one of the most complicated and controversial problems of modern English syntax, variability in those models and interpretation of similar syntactic structures such as syntactic transformation, syntactic version, syntactic paradigm, syntactic derivation cause a lot of difficulties in teaching English syntax. In connection with this, the materials of the present dissertation and obtained results can be used in philosophy oriented high schools in compiling the textbooks on syntax of modern English, theoretical grammar, English communicative syntax, as well as practical exercises on English language teaching.

**Approbation and application.** The main results of the dissertation have been at the I, II, III and IV Republican Scientific Conferences, “Actual Problems of Foreign Language Teaching”, at the I, II, III International Scientific-Practical Conferences, at the International Scientific Conference on “Multiculturalism and tolerant values in the heritage of great leader Heydar Aliyev”, at the International Conference on Global Science and Innovation. Materials and results of the research were used in 39 scientific plays published in The Republic and abroad (US, Moscow).

**Name of the organization in which the dissertation is performed.** The work was performed at Department of Indian-European Languages at the Institute of Linguistics named after Nasimi of ANAS.

**Structure of the dissertation.** The research work consists of an introduction, five chapters, the summary and the list of applied literature. The dissertation contains Introduction 7 pages, Chapter I – 60 pages, Chapter II – 52 pages, Chapter III – 66 pages, Chapter IV – 37, Chapter V – 81, the result is – 4 pages, and the total volume of the symbol is 459 723 characters.

## BASIC CONTENTS OF THE THESIS

Information about the urgency of theme is justified, the aims and objectives of the research are determined, its scientific novelty has been interpreted, its theoretical and practical significance is underlined, methods and sources of research, defense provisions, approbation and structure of the work are provided in the *Introduction*.

In the *first chapter* of the dissertation called “*Structural-semantic features of simple sentence*” the issues, such as sentence problem in syntax, classification of sentence and sentence members, word order in English, simple sentence models at various stages of historical development in English, means of expression of sentence members, the communicative types of the sentence, the means of expression of sentence members, the changes in the word, the effects of these changes on the variations in the simple sentence models are studied. According to J.Layons, a British structuralism, science in linguistics means examining observations on the general level of language structure and proving empirical results.<sup>1</sup>

The main purpose of linguistics that was a part of philosophy and has gradually become an independent science is to understand the objective reality of the language, study and interpret it is correctly.

Grammar is a science that learns whether or not the exchange of ideas between the speaker and the listener is based on the rules. In other words, grammar is the science that learns the forming rules or principles of the text.

History of linguistics shows that Aristotle, who founded the theory of grammar, developed theories of sentences and parts of speech. Grammar training was further developed by the Alexandria School. The grammar that existed during this period was later called “traditional grammar” by linguists of the 19th century.

---

<sup>1</sup> Lyons, J.M. Generative Syntax. Ner Horizon's in Linguistics. / J.M.Lyons. – Cambridge: Cambridge University Press, – 1973. – p.14

English scientist C.M.Simpson writes: “*The science that learns the grammatical structure of words is morphology, and syntax learns structures bigger than the word*”.<sup>2</sup>

R.H.Robins talking about Grammar sections wrote: “*Syntax is the most important part of grammar*”.<sup>3</sup> L.Bloomfield, founder of American structuralism, wrote that morphology covers the improvement of words and phrases, syntax covers phrase forming.<sup>4</sup> According to J.Greenwood, syntax examines the rules for the correct position and combination of words.<sup>5</sup>

L.Bloomfield’s ideas were later continued by C.Fris and Z.Harris. After N.Chomsky, the successor of Z.Harris, the goals and objectives of grammar, including syntax, were interpreted in another aspect. While talking about grammar, N.Chomsky understood grammar as the collection of all sentences having the ends in the language. He pointed out that there are rules in language having ends in counting and with their help, innumerable sentences are generated. They call it a derivative or generative grammar. According to N.Chomsky, linguist’s task is to distinguish the correct sentences from the wrong ones.<sup>6</sup>

Sentences can be studied in two ways. Syntactically the sentence may be considered as sequence of words, phonologically it can be considered as phoneme sequences. The word sequence may both change and not change the meaning of the sentence, for example:

*I had an idea on my way home. – On my way home I had an idea.*

---

<sup>2</sup> Simpson, C.M. A first course in Linguistics. / C.M.Simpson. – Edinburgh: Edinburgh University Press, – 1979. – p. 103

<sup>3</sup> Robins, R.H. General Linguistics: An introductory survey. / R.H.Robins. – Bloomington: Indiana University Press, – 1964. – p. 191.

<sup>4</sup> Bloomfield, L.S. Language. / L.S.Bloomfield. – London: George Allen & Unwin LTD, – 1933. – p. 295.

<sup>5</sup> Greenwood, J.H. Essays in Linguistics. / J.H.Greenwood. – Chicago: University of Chicago Press, – 1957. – p. 124.

<sup>6</sup> Chomsky, N.A. Aspects of the Theory of Syntax. / N.A.Chomsky. – Cambridge. MIT Press, – 1965. – p. 48.

Sentence is a part of speech, and its classification, first of all, should be carried out on a communicative principle. In accordance with this classification of the sentence this principle is called the “purpose of communication” in traditional grammar. Traditionally sentences are divided into following groups for their purpose in communication: 1) The Declarative Sentence; 2) The Interrogative Sentence; 3) The Imperative Sentence.

The fact whether to include the imperative sentence into this classification has caused controversy. The American linguist G.O.Kerm specially underlined this type of sentence and called it the oldest sentence type. He kept the imperative sentences beyond his classification.<sup>7</sup> Many have noted that exclamatory sentences do not constitute a separate type and all types of sentences mentioned can be presented in two variants: variant expressed with a special intonation (exclamatory), variant not expressed with a special intonation (non-exclamatory). It can be noted that exclamatory sentences can easily be transformed into declarative sentences. For example: *What lovely weather it is!* – *It is lovely weather.*

Exclamatory sentences in transformational grammar are called core sentences (kernel sentences). These sentences can be transformed into other types of sentences. Z.Harris noted that the language consisted of a group of core sentences and their transformations. He mentioned 7 types of core sentences: 1) N + V (John is reading); 2) N + V + P + N (John is reading about nature); 3) N + V + N (John is reading a book); 4) N + N (John is a student); 5) N + A (John is clever); 6) N + P + N (John is at home); 7) N + D (John is here).<sup>8</sup>

I.P.Ivanova has stated that there were three models of simple sentences in ancient English: SP model, SPO and SPC model. Only double-member sentence type of the simple sentence can have these

---

<sup>7</sup> Curme, G.O. *Syntax*. / G.O.Curme. – Boston: D.C. Heath, – 1931. – p. 96.

<sup>8</sup> Harris, Z.S. *Structural Linguistics*. / Z.S.Harris. – Chicago: Univ. of Chicago Press, – 1963. – p. 98.

models. In the creation of each of these models, the main members of the sentence Subject (S) and predicate (P) are used.<sup>9</sup>

There are several variants of each simple double-member sentence in the ancient English language. Only one of these simple sentence models (SP model) is distinctive, while others (SPO, SPC) are broad double-member sentences. Characteristics of SP model are expressing the predicate with intransitive verbs and its lack of reconciliation with object. In this version of a simple double-member sentence consisting of subject and predicate, subject has a referent relationship with object and the person. This type of distinctive sentences is mainly found in poetic works. For example: *Strēāmas styredon* (Stream Strengthened). *Windas wēōxan* (Wind blew out).

In the sentences included in the SPO model, the verb always entirely or directly interacts with the complement. According to grammatical relevance of verb, we can distinguish three options inside this model:

Variant 1. simple double-member sentence (SPO<sub>1</sub>) variant consisting of subject, predicate and indirect complement.

Variant 2. simple double-member sentence (SPO<sub>2</sub>) variant consisting of subject, predicate and direct complement.

Variant 3. simple double-member sentence (SPOO) variant consisting of subject, predicate and both direct and indirect complement are more found in English: *Hī hine forbaernap* (they burn him); *Hē þā þās andsware onfenz* (he then received this answer). In these model sentences the complement is in direct case.

In ancient English in such simple sentences subject was sometimes omitted. Even though subject does not take part in such incomplete sentences, verb was enough to express person and quantity. This can be explained by the fact that in ancient English it was formal means of gender, person, quantity and case categories showing the relations between sentence members.

Comparison with subsequent periods manifest that consensus and management relations during this period has played a leading role among the components of word combinations as well as

---

<sup>9</sup> Ivanova, I.P. History of the English language. / I.P.Ivanova. – M.: Higher School, – 1976. – p. 244.

sentences members. Since the formal indicators are rich in Ancient English subject could not be used in the sentence. For example: *Ðā cwōm þær micel snāw* (Then there snowed a lot); *Norþan sny̆wde* (It snowed in the north).

As the historical development periods of English are interchanging, different features have emerged in its phonetic, lexical, and grammatical system. At a later stage, the development of English syntactic structure was directly related to the changes in its morphological structure. A group of researchers have explained the change in the morphological structure of English throughout the history and the simplification of interaction with other languages. They called X-XIII centuries as the “Period of grammatical changes” in the history of English.

Other group sees the reason for the changes in English grammar in changes in spoken voices (according to phonetic theory), another group (A. Hornby, H. Lehnert, and others) see it in loss of endings and the appearance of analytical forms (according to the functional theory).<sup>10</sup>

O. Jespersen tried to explain the cause of grammatical changes in English history in his proposed “development theory”. Opposing the general interpretation of the grammar history of all Indian-European languages he supported the study of the English structural development separately. O. Jespersen’s “development theory” was accepted by many linguists because it illuminated a number of reasons for the changes in English grammar.<sup>11</sup>

In Medium and Early New English, the predicate of SP sentence model manifested with indirect form of verb. During the Middle English era, since there was no change in the structure of the verb of these types the SP-model sentences have remained the same. In I variant of the SP model sentence (i.e. in sentences with subject and person) constructions with "Medial" meanings have disappeared

---

<sup>10</sup> Hornby, A.S. Oxford Advanced Learner’s Dictionary of Current English. / A.S.Hornby. – Oxford: Oxford University Press, – 1982. – Part II, – p. 239.

<sup>11</sup> Jespersen, O.H. Progress in Language with Special Reference to English. / O.H.Jespersen. – London: Longman, – 1894. – p. 291.

and “directional case” was dismissed starting from the early Middle English.

In II variant of the SP model sentence (i.e. in sentences with subject and without person) the scope of the use of sentences starting with the "hit" (it) formal subject has been expanded. It should be noted that until the end of the period, sentences without subject could only be made with the help of some verbs (for example, *befeilen* (to become)).

The key point in the development of the SP model is formation of III variant. The sentences that begin with “*ther*” and with the inversion of the main members have been included in here. For example: *Ther was a knight ful worthy in his lordes werre.*

In Middle and early New English, the variants of this sentence model began to develop. Complement with preposition or without preposition could be used in these sentences. In Middle English era, the scope of use of SPO sentence model with complement without preposition has been expanded. Thus, flexion disappeared and the previous direct complement was transformed into indirect complement. The composition of II variant of the SPO sentence model was changed as a result of change in direct-indirect category in ancient English. At the beginning of the Middle English era, it is necessary to include all the sentences in this variant that contain the verb-object associations used with complement with preposition. For example: *thei sent on the bischop of Lincoln.*

III variant (SPOO) of SPO sentence model has undergone considerable change. Though the changes here have not caused the formation of the model again, but its composition has changed. Disappear of case suffixes of noun and broken management relations starting with the Middle English era resulted with limitation of this model in two variants:

1) combination of two indirect complements without preposition;

2) combination of two direct and indirect complements without preposition.

The SPC sentence model is the most changed model among models. The changes had two different types of effect over SPC

sentence model: the first effect has changed the composition, while the latter enriched it with new syntactic units, i.e. with linking verbs without changing composition.

The SPC sentence model of ancient English had a one-member structure with its limited functionality during the Middle English. Changes, firstly, were caused by the transfer of some syntactic forms to morphological ones, that is, transfer of subjective predicate to analytical forms of verb.

Subjective predicate consisting “to be” and past participle of direct verbs of the ancient English transformed to analytical form of unknown type. After this transformation only “to be” and past participle defining condition in the SPC sentence model composition remained. Subjective predicate formed with previously existed *bēno* (wesan) and past participle of indirect verbs generated analytical form of perfect tense verb. Later, these types of verbs generated perfect tense form combining with "to have". Subjective predicate formed with “to be” and present participle of indirect or direct verbs gave meaning of sustainability during the ancient English era and this meaning gradually disappeared in medium English. At the same time, – “to be + preposition and a noun created from verb” as the new form of subjective predicate appeared. This combination has the same meaning: for ex., *he was on huntunge*. That form appeared in the fourteenth century. At the beginning of Early English this form already generated progressive tense forms of verb.

During the Middle English, the one-member sentences begin to disappear slowly. Thus, *him þuhte, mē þynkeð* type person-object one-member sentences transformed to double-member sentence type starting from the Middle English. For this, “hit” (it) pronoun begins to be used in this type sentences as formal subject in singular III person. It should be noted that according to the form of the subject, these types of sentences are closer to a group of impersonal sentences. In most cases, “hit” pronoun was able to provide information before the incident that will take place in the sentence. For example:

*Hit me of þincð, forgyf hit him* (It seems to me, forgive him for it).



During this period, the new structure-semantic type also completed one-member sentence model, and unknown type of verb having indefinite meaning was standing on its base. The type category of verb was further developed in Middle English. During this period, unknown type of verb was generated only with “*ben*” auxiliary verb and past participle. For example: *and wascried loude* (and they cried loudly). The doer of an action in sentence is not formally stated and it is believed that the doer of an action is uncertain. As a result of the disappearance of “Man” pronoun close to the end of the Middle English era the role of such types of sentences began to increase. It should be mentioned that at that time, the pronoun “one” did not mean indefinite person.

Such indefinite one-member nominal sentences as a special structural type of sentence disappeared in the eighteenth century only. Even within certain time, the functional parallelism of the indefinite individual meaning one-member and double-member sentence types were also used.<sup>12</sup>

Let us have a look at the following example of Coser: *My God, me mette I was in swich mischief.* (My God, I dreamed I was in such grief.)

There are some changes in the structure of the communicative types of the double-member sentence during the Middle English and Early New English. In this period, the incomplete inversion associated with analytical forms of verb are increasing in the general and specific types of interrogative sentences. Fundamental changes in the creation of interrogative sentences typically were in Early new English era. Changes were related to the occurrence of a fixed word order in the sentence. From the first days of the period word order was the key means of expression of the syntactic relations in the sentence. In this era, in accordance with word order in the interrogative sentence, complement without preposition was used after verb. Namely, this situation has become the main syntactic sign of complement without preposition. However, in the beginning of the sixteenth century, there were cases when subject was used between

---

<sup>12</sup> Ivanova, I.P. History of the English language. / I.P.Ivanova. – M.: Higher School, – 1976. – p. 164.

predicate and complement without preposition in the interrogative sentences. For example: *Eat cats mice?* The confusion related to interrogative sentences has emerged in the Middle English when there was a complete inversion. During complete inversion, predicate in present or past tense without using auxiliary verb is used at the beginning of the sentence. In the early 16th century, a complete inversion occurred while making both general and specific questions to sentence in present or past indefinite tense. For example: *Call you? What find I here?*

The word “do” as an auxiliary verb starting from the 15th century, has begun to be used both in interrogative and negative sentences. The use of the “do” auxiliary verb in interrogative sentences has shown that the position of subject and predicate in the sentence became stabilized. At the end of the Early New English, analytical form of “do” and “did” were used to form specific interrogative sentences. For example: *Why did you not speak to him?*

Questions with both "do" and special questions can be found in the works of Shakespeare: For example: *What meanes this, my Lord?; How like you this play?; What doe you call this play?* and etc.

Ancient structure type has been used for a long time in the general question forming. Until the middle of the eighteenth century, general questions were created with the help of complete inversion, i.e. with putting the verb at the beginning of the sentence without the use of auxiliary verbs. For example: *Seemed he a gentleman?; Know you to whom you speak?* The modern-day structure of general interrogative sentences only began to form after 1750.<sup>13</sup>

A.R.Kroch tried to give a functional explanation of the issue while speaking about the auxiliary verb "do" and noted that "do" having used in the sentence helps the listener distinguish subject and complement. It distinguishes the “V+NP+NP” model sentence with the “Do+NP+V+NP” model sentence. A. Kroch argues that it is not

---

<sup>13</sup> Ivanova, I.P. History of the English language. / I.P.Ivanova. – M.: Higher School, – 1976. – p. 170.

difficult to say that the first NP that is used after “do” auxiliary verb with the help of it in the second model.<sup>14</sup>

In Ancient English, two or more denial elements were used in the formation of negative sentences. In ancient period, “Ne” particle combined with verbs such as *bēōn* (to be), *habban* (to have), *willan* (to want), *witan* (to know) were used to mean negative: ne + is > nis; ne + wæs > næs; ne + wæron > næron; ne + hadde > nadde; ne + hað > nað and etc.<sup>15</sup>

Near the end of the ancient English, (*noht*) the other stronger denial particle begins to be used in formation of negative sentences.

During the Middle English, subject was different, both in terms of meaning and means of expression. The subject was mainly characterized by its position in the sentence much more. The subject was used before finite form of the verb. As for the means of expression of a subject, both in the Middle and Early New English it was expressed by a noun and pronouns. For example: *Hauelok was a ful god gome* (Havelok was a very brave man); *He was þe wicheste man at nede* (He was the bravest man at need).

During this period, the subject could also be expressed by the genitive case constructions. The construction consisted of a noun in the nominative case, a genitive pronoun, and another noun. For example: *Edwald his mother* (Edwald’s mother); *Thar were Arthur his men* (Arthur’s men were there). At late Early New English, these types of constructions were used anymore.<sup>16</sup>

***Second chapter*** of the Dissertation is called “***Variativity problem in modern English***”. It is noted here that recently years a number of studies on variability in the world, including Azerbaijani linguistics have been conducted, monographs and articles have been written, and the scientific object of research has considerably expanded. Some linguists (G.P.Torsuyev, N.I.Krilova, A.Martine and

---

<sup>14</sup> Kroch, A.R. Verb movement in Old and Middle English: dialect variation and Language contact. / A.R.Kroch, A.C.Taylor. – Cambridge: Cambridge Univ. Press, – 1997. – p. 72.

<sup>15</sup> Abdulrahimov, E.H. The ABC of the history of the English language. / E.H.Abdulrahimov. – Baku: “Mutarjim”, – 2005. – p. 90.

<sup>16</sup> Ivanova, I.P. History of the English language. / I.P.Ivanova. – M.: Higher School, – 1976. – p. 74.

others) propose to take the problem of constancy in a dialectical unity in further researches. Investigation of the problem from this aspect is widely used in the works of well-known representatives of the former Soviet linguistic science. G.P.Torsuyev writes that phoneme shades, linguistic harmony of variability have a special place in the semantic structure of language. According to the scientist, multiplicity extends the frequency of processing in all areas of the communicative function of the language in its development. Variance and integration of invariance also show itself in the language system based on specific language specifications as the process of differentiation of phonetic, lexical, syntactic variants. language units is accelerating, and this is characterized by the stabilization of literary norms. The following notes of G.P.Torsuyev on variability and constancy in the language structure are of interest: *“The constancy and variability are one of the main features of the language structure and the language without them can neither exist nor develop. Constancy and variability can be demonstrated in all aspects and levels of the language, and it is characterized by unique characteristics of each level”*.<sup>17</sup>

F.K.Saussure approached the concept of meaning in the language system, the social and mental language signs as the factors determining the internal substance of the language. In fact, meaning is understood as the meaning of the sign of the variance as the term of linguistics.<sup>18</sup> The approach of academician A.Akhundov on this issue is interesting. The scientist writes and scientifically justifies discretion of system of signs possessing both the content and the form of expression: *“Language as a system of signs enters into a category with them (pictograms, writings, road signs, etc.), but differs with its importance and complexity. There is a need to clarify the essence of the language, generally the nature of its meaning as system of signs”*.<sup>19</sup>

---

<sup>17</sup> Torsuyev, G.P. Constancy and variability in the phonetic system. / G.P.Torsuyev. – M.: Science, – 1977. – p. 3.

<sup>18</sup> Saussure, F.K. Works on linguistics. / F.K.Saussure. – M.: Progress, – 1977. – 636 p.

<sup>19</sup> Akhundov, A.A. Phonetics of Azerbaijani language. / A.A.Akhundov. – Baku: “Maarif”, – 1984. – p 84.

An associative model of the semantic variants of components has been the focus of many experts on critical crucial evidence. Chomsky's comments on this subject are of interest. The probability of switching from one word to another in the chain of speech does not depend on the grammatical accuracy of the words in that sequence. He brings this example: *Colorless green ideas sleep furiously*. Another example: *Buildings along the street were slowly flying into the sky*. This sentence is grammatically correct, but it is not semantically correct; there is grammatical but not semantic interconnection of the words. The number of such examples can be increased. Thus, the component model of semantic variants is not adequate to the grammatical theory.<sup>20</sup>

Generative grammar has two important differences from previous traditional and structural grammar. First of all, derivative grammar is implicit, i.e. shows possible sentences available in the language secretly, implicitly. According to these rules, it creates all the sentences, but in that case it is possible that these rules are entirely implicit, does not grant anything to the responsibility of reader, and compromise his/her linguistic knowledge. Secondly, derivative grammar is not associated with the actual network of syntax sentences, but it is associated with a possible sentence network.

After N.Chomsky, sentence model and its means of expression began to be investigated in the field of syntax, by defining the rules which constituted the basis for making sentence. There are different opinions on the relations between the members of the sentence in linguistics. In Russian linguistics, the predicate is completely dependent on the subject. They also consider subject and predicate coordination related members. According to this concept, the predicate is urgent. According to the synthetic theory of L.Tenyer, the verb means subject and predicate being the center of the sentence

---

<sup>20</sup> Chomsky, N.A. Logical Structure in Language. // –New York: Plenum Press, “American documentation” – 1957. – Vol. VIII, – No 4, – p. 98-122.

and these are called “actants”. Auxiliary words accompanying verb are “circonstants (adverbial)”.<sup>21</sup>

The sentence is more complex unit in the language system. Its complexity, first and foremost, depends on the abundance of its components, and their quantity is structurally unlimited. The sentence can be as large as possible, and every sentence can be continued as much as desired. But the elements that constitute the part of the sentence are not infinite. The complexity of the sentence is not that its components is infinite, on the contrary, the multiple interaction of the elements constitute it.

When it comes to the expression and content of the sentence, its semantic aspect is considered. Semantic aspects include the elements of the sentence, in other words, branch sentences and sentence members. The least studied areas of the language are semantic and pragmatic aspects in syntactic level. Structural, semantic and pragmatic aspects are considered as key aspects as they cover the three major aspects of language - form, content and manifestation.

Though variability or optionality and its associated terms such as "variant", "invariant", "variation" and their derivatives have close syntactical meaning, each of them has a specific linguistic meaning and it is required to clarify the content of each one when applying in linguistic science. According to O.S.Akhmanova, the term of *variativity* expresses the diversity of the definition of the speech, its different varieties with differences in different working conditions, as well as in the social and territorial identities of the speakers.<sup>22</sup>

The concept of variability in linguistic literature is interpreted in three ways: First, any modification resulting from any kind of volatility, evolution process, or other reasons, different language means used to express similar or close events.

Considering variability in this way does not require the optionality-invariant opposing discrepancy, it limits the content of

---

<sup>21</sup> Tenier, L. Basics of structural syntax. / L.Tenier. – M.: Progress, – 1988. – p. 312.

<sup>22</sup> Akhmanova, O.S. Dictionary of linguistic terms. / O.S.Akhmanova. – 2<sup>nd</sup> ed. – M.: Soviet Encyclopedia, – 1966. – p. 75.

the variability to only one optionality. A.K.Kamchatnov treats concept of variability like this.<sup>23</sup>

Secondly, they believe that changes in language are a distinctive feature, and the optionality is one of the clear features of speech.<sup>24</sup>

Thirdly, the term variability is used as a character of language units and action means in synchronous background.<sup>25</sup> In this case, the concept of variability, especially in phonological studies, used in the background of the concept of invariance. Here the term “variant” is accompanied by the term “invariant”.

The term of invariant in linguistics is understood as “An abstract element of the language system, which is far from concrete realization”.<sup>26</sup> Concrete objects that form any group or class and objects that can be extracted as invariants on their basis are considered as variant. Such understanding of the invariant and variants means that they demand each other, and the existence of one another apart is not possible.

Each option as a member of any variant range has common and distinctive signs since it has properties that belong to the general class, has optionality and invariant qualities, it is possible to avoid comparison of the optionality and invariant under certain conditions. In many linguistic studies, avoiding the comparison of invariant and variant apparently, as we have said above, can be explained with that possibility. However, the problem of variability remains with its whole sharpness in the following cases:

a) while learning the mechanism of the language structure, which can be called variant-invariant;

b) while learning the language activity, defining transition from speech to the language;

---

<sup>23</sup>Kamchatnov, A.M. Lexical variability and lexical meanings. // – M.: Science, Voprosi Yazikoznanie, – 1983. – №4, – p. 122.

<sup>24</sup> Koseriu, E. Synchrony, diachrony and history. / E.Koseriu. – In the book: “New in linguistics”, – M.: Science, – 1963. –Vol. 3, – p. 77.

<sup>25</sup> Solntsev, V.M. Variativity as a general property of the language system. // – M.: Progress, Voprosi Yazikoznanie, – 1984. – №2, – p. 31-42.

<sup>26</sup> Akhmanova, O.S. Dictionary of linguistic terms. / O.S.Akhmanova. – 2<sup>nd</sup> ed. – M.: Soviet Encyclopedia, – 1966. – p. 176.

c) while learning interlanguage changes and developmental factors (variability and variant having new meaning);

d) while clarifying the different appearance and shape of the same language unit;

e) the social-linguistic study of language and others have great importance in order to apply the variations of norms and different styles of the same units, expressive and normative purposes.

The presence of the same language unit in different forms constitutes the specific feature of language variability. The existence of separate units of language is its variability, existence of its innumerable variants together. In optionality circle of the language units variant-invariant manifested in the whole language system within the range of language units.

Variant-invariant relationships describe paradigmatic relationships (such as paradigmatic relationships of objects that have important common properties) such as all classes and all members of that classes, as well as characterizes their relationships with different paradigms according to the volume (including smaller paradigms into larger paradigms).

Paradigmatic relationships exist as variant-invariant connections. The relationship between members of a paradigm means a relationship between variants. Relationships of the paradigm with the members a paradigm as a whole is relationships of invariant and variants.

*Similar syntactic structures and their specific features.* Linguistic studies are based on aspects, levels, each one or one of them being studied as a source of speech. One or another criterion in each aspect has parameters that allow for the identification of key aspects of language phenomena. A set of parameters serves to determine the structure of the studied linguistic object.

Relationships of diachronic-synchronic, language-speech, form-content, paradigmatic-syntactic, and so on. are traditional aspects of identifying syntactic structures, differential features, relative structural differences and sense of meaning. In recent years, one more aspect of linguistics has been identified, known as a derivation aspect. Though derivation, which covers all aspects of



language, is not new in linguistics, its spreading to syntactic research is comparatively new and it has a major importance while identifying similar syntactic structures.

*Syntactic derivation.* In the "Dictionary of linguistic terms," the term derivation is associated only with word creativity and "the creation of new words with the help of affixes in accordance with word creation models".<sup>27</sup> As it can be seen, there is no information on the concept of synthetic derivation. But linguistic development in recent decades has substantiated the synthetic analysis of the derivation and certain studies have been conducted in this area.

Let us pay attention to the compatibility of the derivation aspect of the language with general-dichotomical aspects:

G.G.Silnitski offers to distinguish grammatical and lexical-semantic levels of the sentence, as well as grammatical and lexical-semantic levels of syntax in view of derivation.<sup>28</sup>

The syntactic level consider such a derivation that a sentence is converted to another sentence like the derivative sentence here (in other words, a sentence with derivation) differs from the original sentence according to its grammatical status and meaning. For example, the following sentences combine with derivation relationship to one another: 1. *Jane opened the window.* - *Grandmother made Jane open the window.* 2. *The child is sleeping.* - *The child wanted to sleep.* 3. *The hostess washed the floor.* - *The hostess began to wash the floor.*

The following two types of sentences can be observed in English as well as in any language:

1. The sentences of the first type at the level of sentence members consist of a predicate and a subject, but at the level of parts of speech (from morphological point of view) it consists of a verb acting in the function of a predicate and called a situation, and a noun acting in the function of a subject and called a subject of the situation. For example: *Jenny lay down;* *The lamp was stirring,* etc.

---

<sup>27</sup>Akhmanova O.S. Dictionary of linguistic terms. / O.S.Akhmanova. – 2<sup>nd</sup> ed. – M.: Soviet Encyclopedia, – 1966. – p. 129.

<sup>28</sup> Silnitski, G.G.. The theory of derivation and its place in the system of linguistic disciplines. / G.G.Silnitski. – Perm: Perm University Publishing, – 1982. – p. 5.

2. The sentences of the second type at the level of sentence members consist of a predicate, a subject, and a complement, but at the level of parts of speech it consists of a verb acting in the function of a predicate and called a situation, a noun acting in the function of a subject and called a subject of the situation, a noun (name) acting in the function of a complement and called an object of the situation. For example: *The grandmother cleaned fish. The boy split wood* and etc.

Let us keep on the derivation relations that occur in these two sentences. Compared to any sentence with first sentence, which differed according to the meaning of the initial sentence typically records the formal changes in the derivation that occur in the expression plan – the meaning of the internal meaning. For example, *The boy split wood. The boy wanted to split wood.*

This derivation chain consists of a predicate and a subject at the level of sentence members, at the speech parts used as the verb used and called the situation, a noun used as a subject. It does not differ from the structure of the initial sentence in the level of the derivation chain and the level of speech at the level of the meaning of the internal meaning. At the level of internal meaning status, it does not differ from the structure of the initial sentence in the derivation chain and the speech parts. The difference in the level of internal meaning status is that such an element is included in the sentence structure which expresses the elementary meaning, and this meaning is the meaning operator of the derivation and determines the difference between the meaning of the initial and derived sentences. The structure of the derivation at the level of the sentences is not different from the structure of the initial sentence. However, there are already differences in the level of sentence members.

If there is personal verb in the structure of the initial sentence, there are two verbs in the structure of the derivative sentence: a verb with a person and a verb in the infinitive form, and they are interrelated with each other both formal and point of view of meaning. The differences between them in the case of internal meaning statuses are those element in the elementar meaning of "modality" is included into the meaning structure of the sentence,

and it is the meaning operator of the derivation of the sentence. The formal operator of the derivation is the "to want" verb with a person and the infinitive form of the main verb.

In the word creation process unlike the process of form correction, the lexical meaning of the word varies, ie its internal meaning varies. The change of the lexical meaning of the word often leads to a change in the formal status of the word. Changes occurring in the word creation relate clearly to the lexical level, and due to this the word creation morphology can be called a lexical morphology. It is not so difficult to observe that the relationship between the members of the word creation morphological paradigm is synonymous with the relationship between the members of the derivation syntactic paradigm, because in both cases the basic essence is that the internal meaning status varies considerably and prevails over the considerable formal status changes of the formal status changes. If the accuracy is correctly defined, then we can talk about the syntactic word creation considering the derivation paradigm of the sentence.

The above mentioned is consistent with the perspective of O.Jespersen: *"Transformation of the syntax with traditional linguistic terms means transfer of paradigmatic relationships to morphology; in other words, that means the settlement of these syntactic constructions and their paradigmatic set up"*.<sup>29</sup> The obtained result is from the classification of changes in the syntax of the sentence in the derivation process. Firstly, the derivative sentence differs from the initial sentence both at the level of sentence members and in the formal grouping of sentence members, i.e. one of the elements in the initial sentence changes the grammatical position in the derivative sentence. (1) *Water boils.* (2) *My mother boils water.*

Secondly, the number of sentence members in a derivative sentence is less in comparison with the initial sentence. Such cases are typical for passive derivations. For example: (1) *Mother cleaned fish.* (2) *Fish was cleaned.*

---

<sup>29</sup> Jespersen, O. Language: its nature, development and origin. / O.Jespersen.– London: Longman, – 1950. – p. 67

Thirdly, the derivative at the level of sentence members does not differ from the original sentence, but differences in the level of parts of speech are observed. During such a derivation all sentence members in derivative sentences are equal to the number of sentence members of the initial sentence.

It is also important to note one problem with syntactic transformation and syntactic derivation that syntactical structure of concrete sentence results in derivative processes we talk about.

*Syntactic transformation.* Transformational method was first proposed by Z.Harris, one of the most prominent theorists of descriptivism. N.Chomsky has worked on creating a transformation model of transcriptive grammar. N.Chomsky's grammar theory although based on a number of descriptivism principles greatly differs from the descriptive linguistics.

Dissemination of Transformational Grammar ideas is accompanied by a sharp criticism of the conceptual theory and methods of analysis. The new ideas spread so rapidly that explaining the reason for this dissemination was itself a necessity. R.Uellz connects such a turn in linguistics with a change in the direction of development of social sciences. R.Uellz shows that the necessity to explain the facts emerged in the 50-60s though facts were only mentioned in the 30s and 40s and they did not need to explain them, and this was the main purpose of transformation-derivative grammar.<sup>30</sup>

There are also others who explained the success of Transformational Grammar with other reasons. The main point in this area is the proximity of predictive grammar to the traditional grammar. Hence, the reason for the success of the transformation was the depletion of the possibilities of the descriptive model rather than the power of transformational grammar. Interestingly, the issues that have not been explained or cannot be explained by descriptivists are in the focus of transformational grammar. The transformation method analyzes the syntactic structures above all in paradigmatic aspect that it is not possible with a descriptive approach. N.Chomsky

---

<sup>30</sup>Wallace, L.Ch. The meaning and structure of the language. / L.Ch.Wallace. – M.: Progress, – 1975. – p. 137

wrote that he proposed the transformation method since the method of analysis of sentence components is insufficient.<sup>31</sup> On the other hand, Z.Harris as one of the most prominent representatives of descriptivism proposed transformation as an addition to descriptive linguistics, and did not submit it as a substitute method.<sup>32</sup> N.Chomsky used the transformation method because of the lack of descriptive methodology.

Transformational model is based on the following: this model is divided into two parts or components (syntactic and phonological component). In its turn, the syntactic component consists of two subcomponents. The first of these is the classification of the elements of the sentence and the rules of their merging. This section is built entirely on the principles of descriptivism. The second subcomponent consists of complex operations; these operations are a change of the grammatical structure of the sentence and putting it to another form. More simple sentences are transformed into more complex syntactic structures with the help of these operations. The phonological component consists of morphological and phonological rules. These rules are the rules of merging morphonemes and phonemes.

Operation method takes the main place on transformational model. Grammar of language appears in the form of the most simple structures where it is possible to carry out various operations on it. Many corrective structures are taken from these simple structures with different ways. The transaction taken to get a complicated sentence on simple structure (nuclear sentences) is called transformation, the corrective sentences received here are called transforms. The structure of the sentence is changed based on the transformation rules, it is compacted or expanded, sentences are combined among themselves. All these changes do not change the set of elements that make up the original (nuclear) sentence but it only changes its grammatical structure. The major operations based on widespread transformation rules are as follows:

---

<sup>31</sup> Chomsky, N.A. Introduction to the formal analysis of natural languages. / N.A.Chomsky, G.A.Miller. – N.Y.: New York University Press, – 1963. –p. 57

<sup>32</sup> Harris, Z.S. Joint occurrence and transformation in the language structure. / Z.S.Harris. – M.: Science, – 1962. – p. 12.

1. Permutation (replacement of components), for example:

*She bought the book. - Did she buy the book?*

2. Substitution (replacing one element with another), for example:

*I saw him walking along the river. - I saw him.*

3. Adjoining (addition), for example:

*Leonard did not see anybody. - Leonard saw nobody.*

4. Disposal of ellipses or elements, for example:

*I tell you that you should return my book. - I tell you to return my book.*

Transformation rules are put in such an order that each of them to be as simple as possible, ie, to have as little operation as possible. However, most transformations are combined and complex. Each transformation consists of a set of separate operations. The structure of the initial sentence is analyzed for the correct implementation of this operation. The analysis phase is performed before the synthesis phase. The essence of the analysis is that the sentence is divided into parts that form it, and the syntagmatic relations between these elements are determined. Speaking about ellipsis, K.Abdullayev characterized it as the absence of a worthy unit, he called it a unit that can be replaced by the complete version of the language that goes into the imagination and is deeply hidden.<sup>33</sup> Component analysis of the sentence is usually described as a syntactic "tree" that the branches of this tree correspond to different direct participants. Thus, this integrity integrates all phases of the analysis into an entire scheme of direct participants. A description of the derivative history of a sentence is referred to as the "transformation structure indicator" in the transformation model.

The area of application of the transformation should be determined first for Transformational Grammar, ie the paradigmatic sequence of the sentence should be determined. Formal relations should be established between sentences, formal relations that determine the structure of a sentence is a structure of another sentence structure that should be found. The fundamental

---

<sup>33</sup> Compound syntactic units in Azerbaijani language. / K.M.Abdullayev [and other]. – Baku: "Mutarjim", – 2012. – p. 159-160.

requirement for transformation is that the invariant of syntactic relations, as well as the meaning of the syntactic relations in all invariations must be protected, not changed. The invariant is a constant quantity. The formal sign of this constant quantity is “the principle of individual coverage” suggested by Z.Harris. The essence of this principle is as follows: when there are special, individual elements sentences, they are not transformed, and cannot be transformed. In principle, any word that cannot be used in the original sentence should not be used in the transforms. According to Z.Harris, transformation is considered to be “a link between the two structures having the same amount of individual coverage”. Although the guidelines given by Z.Harris are useful, it is not quite universal to precisely describe transformation sphere.

The transformation sphere has been expanded gradually since there is no clear criterion to define the invariant, which is the basis of the paradigmatic sequence of sentences. The sentence obtained by the Substitution method is also included here. However, substitution implies not only sentences re-arranged, re-organized in a new form, may imply the change of other element form with keeping syntactic invariance changing another element form.

The purpose of transformation being understood in such a broad sense is to show that there are fewer nuclear sentences. In fact, according to Z.Harris, there are only seven nuclear sentences in English. Countless transformers are transformed from these seven nuclear sentences by transformations.<sup>34</sup>

The theory of transformation finds further development in the theory of paraphrase. According to this theory, the essence of linguistics is the understanding of the meaning. This issue can not be solved by limiting the sentence associated with the transformation relationship. For a complete solution of the issue, it is necessary to eliminate the strong similarity in the lexic status of the sentence. There may be any sentence in the paraphrase theory, and it also can include the same elementary meanings expressed in the sentence including certain elements that are substantially differ for their

---

<sup>34</sup> Harris, Z.S. Joint occurrence and transformation in the language structure. / Z.S.Harris. – M.: Science, – 1962. –p. 178.

lexical composition. “*The complete preservation of the lexical composition of sentence cannot be important during transformation*”.<sup>35</sup>

For example: 1) *G.Jones translated this article.* 2) *This article was translated by G.Jones.* 3) *The translation of this article belongs to G.Jones.* 4) *Translation of this article by G.Jones.*

The transformation theory doesn't undergo such changes. Because the lexical meaning status of such sentences does not match the exact accuracy.

Many of the transformation relations that we have talked about so far are well-known in traditional grammar; since they were only explicitly applied to describe the subject of transformational-generative grammar after the second half of the twentieth century. The grammar, which examines the internal structure of the sentence, its internal relations, and the new sentence emerged from them, can be called transformational grammar, regardless of their attributes.

If we pay attention to the examples of N.Chomsky, one of the founders of the transformation grammar, we can clarify some issues.<sup>36</sup> For example, *Flying planes* word combination (*Flying planes can be dangerous*) does not have one meaning. That is why *the love of God* combination is not the same. If we look at this combination (we mean the word combination) from the point of view of sentence, then *planes* – subject of the sentence, the subject of *fly* or *are flying* verbs, and an object of *fly* verb in another sentence. Compare:(1) *Planes fly.*(2) *John flies planes.*

In this respect, the comparison (if the compatibility of subject and verb doesn't have one meaning in the above-mentioned combinations) of the following two sentences explains the difference between the participle and gerund:

(1) *Flying planes are dangerous.*(2) *Flying planes is dangerous.*

---

<sup>35</sup> Yunusov, D.N. Variability of compound syntactic units in various systematic languages. / D.N.Yunusov. – Baku: “Mutarjim”, – 2007. – p. 42.

<sup>36</sup> Chomsky, N.A. Introduction to the formal analysis of natural languages. / N.A.Chomsky, G.A.Miller. – N.Y.: New York University Press, – 1963. –p. 99



The verb “*are*” in the first sentence is in plural, because, its subject is the subject of “planes” in plural, and this is the main member of endocentric word combination (*Flying planes*). Additionally, *flying* in the first sentence is in equivalence with the adjective according to its distribution place. Finding a main member or modifier is difficult from the second sentence by the combination of *Flying Planes*. Nevertheless, *flying* itself means a name, and the whole combination association marks the subject. If we continue to compare: *Flying is dangerous*. The traditional interpretation of participle and gerund, in fact, is carried out in terms of transformation (although the term "transformation" is not used in traditional grammar). Our interpretation is related to it that a particular word can be used as a verb in one sentence and as an adjective in transformational compatibility combinations, or as a verb in a sentence, and as a subject in other transformational compatibility combinations. So, without prejudice to the nature of these relations let us consider that in the first combination, "*Flying Planes*" does not take derivative structure of adjective + noun as a result of structure transformation as a base for (1) *Planes are flying* type sentences; however “*Flying planes*” in the second sentence can be obtained with transformation rules from structure transformation as a base for (2) *John flies planes* type sentences. If we can imagine that it emerges structures like (1) and (2) based on grammatical rules and they occupy a main place in the structure of the internal meaning, which is, in fact, the apparent occurrence of subject and object interpretation in the *Flying planes* name combinations.

Thus, as an achievement of transformation method it is possible to mention that it "objectivizes" separations and formally describes the designs of different structural constituents. It is possible to analyze the structures and find differences between them with the help of transformations that they do not follow observations during ordinary linguistic analysis. Thus, it is possible to give a structural-semantic classification of syntactic structures and to describe them more adequately with the help of the transformation method.

Syntactic paradigm and its characteristics in similar structures. The issue of the structural change of the sentence is directly related

to the syntactic paradigm. Syntactic paradigm exists due to the transformational grammar. Therefore, similar syntactic structural changes are understood to some extent when we review at some aspects of the syntactic paradigm emergence within the context of transformational grammar.

In transformational grammar, the sequence of constructions, sentences, word combinations which are structurally distinct, but semantically similar are understood as syntactic paradigm. Semantic compatibility is understood as the generality of lexemes and situations. The generality of the situation is understood as a constant relationship between its members. For example:

(1) *The dog bit the man.* (2) *The man beat the dog.*

The sentences have the same lexemes (semantics), but they present different situations and therefore, they cannot be called transformations of one another.

Transformational paradigm is based on semantic equivalence. Z.Harris, one of the founders of transformational grammar, came to the idea (the equivalent of the syntactic sequence substitution is meant) of equivalent substitution by means of substitution method. He puts this equivalence into the place of identical structure by identifying the dual structure.<sup>37</sup>

Then, the syntactic line loses relations with functional equivalent as the basis of semantic equivalence.

In syntactic paradigm, functional equivalence concept has peripheral (far from center) character. In fact, counterpart equivalents differ from each other. Functional equivalent allows “shortening”, “compaction” of meaning. For example:

*I see that the train is coming – I see that.*

The summarizing component cannot be a member of a syntactic-semantic paradigm. Semantic equivalents as the functional equivalent cannot always maintain the position of its own correlation in constructions semantically close to each other:

*The student is reading a book and Reading of the book by the student.*

---

<sup>37</sup> Harris, Z.S. Joint occurrence and transformation in the language structure. / Z.S.Harris. – M.: Science, – 1962. – p. 145.

Both structures are mutually interchangeable. However, it is impossible to go beyond the idea of functional compatibility, which affects one or another degree of semantic sequence, by following the characteristics of the paradigmatic concept in the field of syntax.

Researchers pay attention to the hierarchical structure of the paradigm (the variants, the changes of the sentence). The remaining hierarchy must be considered to be somehow unsatisfactory. Determination of the compatibility between the following constructions are quite complicated:

1. *This boy writes.* 2. *Why doesn't the boy write?* 3. *Boy, write!* 4. *Boy, you shouldn't have written.* 5. *Let the boy write!* 6. *The boy must write.* 7. *It goes without saying that the boy is writing.* 8. *The boy writes.*

Paradigms are simple and complex. Simple paradigms include straight and curved line paradigms. Only grammatical paradigms that are subject to change in simple straight line paradigms are those grammatical meanings that are related to the terms of reconciliation. For example:

1. *I saw him.* 2. *You saw him.* 3. *He saw him.* 4. *We saw him.*  
And etc.

Multiple paradigms can be obtained by changing the time form and object. But all of them will be straight lined.

In the complex paradigm, a number of grammatical meanings change. For example: 1. *He is a teacher.* 2. *I consider him my teacher.* 3. *He is acknowledged (to be) the best teacher.* etc.

Changes in complex paradigm are fairly free. Such a paradigm can be compared to a group. Every wing of this group creates a new group.

The hybrid paradigm stands in the center of the group starting paradigm of paradigms. Hybrid paradigm creates tagmas, and tagmas create their own special paradigms – allotagmas, etc.: For example: hybrid paradigm: *The student reads a book.*

- Tagma: (1) *The students read books.*  
(2) *Books are read by the students.*  
(3) *The book which is read by the student.*  
(4) *The student is reading books.*

- (5) *The books that are read by the students.*
- (6) *Reading of the book by the students.*
- (7) *The books that the students read. etc.*

- Allotagma: (a) (1) *The students read the book.*  
 (2) *The students read the book yesterday.*  
 (3) *The students will read the book.*
- (b) (1) *The student reads a book.*  
 (2) *The student is reading a book.*  
 (3) *The student has read a book. etc.*

The sentence, which is the basic unit of the syntax, is a member of several paradigmatic circles. Being confronted with at least one of the following categories is the base for entering this circle: time, modality, person, quantity. All changes take place within the given model. The differences between the models are determined by the structure of the synthesis, the classification of its members, the nature and amount of the model paradigms. The paradigm of the sentence cannot be identified by the morphological paradigm of the verb. Thus, *I write, You write, She writes* is the change of the same verb on the individuals, it is not related to the paradigm of the sentence. The permanent is the meaning, and the variable is the form for the paradigmatic circle; The permanent is the form, and the variable is the meaning for the paradigmatic series.

According to Danesh, the paradigm of the sentence is included in the sentence structure as the morphological paradigm forms. The number of possible paradigmatic changes is determined only by syntactic and variable categories; and as the syntactic category regardless of the individual, conditional position, regardless of the time, personality, quantity, or position is considered as adjective cases. Then as a category that is not included in the verb paradigm is removed from the list of imperative paradigmatic variables.<sup>38</sup>

Paradigm of the sentence in accordance with its modality and time categories as structural internal changes depends on its limitations. In other words, the paradigm can be one-membered and multi-membered. Restrictions on paradigm can be both syntactic and

---

<sup>38</sup> Danes, F.D. Three Level Approach to Syntax. In Travaux Linguistiques de Prague. / F.D.Danes. – Prague, – 1964. – 268 p.

non-syntactic. The latter is associated with a more lexical limitation on the border of the syntactic level with the lexical level. The syntactic level limitation is conditioned by the structure of the initial form and its general meaning. For example: The paradigm of sentences like *Train! Fire! Explosion!*, and etc. is equal to zero.

The syntactic paradigmatic theory requires the revision of existing syntactic provisions and their clarification. The issue is more strictly differentiation, the principal, paradigmatic classification of formal and functional character. The proposed complex method, referring to formal and objective criteria, the structural qualities of the sentence are the tendency to distinguish between relevant and non-relevant attributes is striking.

P.Adames slightly changes the usual transformation of the paradigm. The author does not include the word combination into a syntactic paradigm and justifies the fact that the paradigm of the leading component of the word combination coincides with the morphological paradigm. In essence, the correct question is: To what extent the structure of the sentence, its members can be opened and altered? To what extent should their lexical composition be considered? According to the author, expansion of the sentence should be limited to its structure scheme. The structural scheme of the sentence includes other objects and adjectives (complements) other than the subject and the predicate, and they are conditioned by the validity of the verb or predicate. The following factors form the sentence as a grammatical unit:

- 1) the structural basis of the sentence (subject + predicate + complement);
- 2) determinatives that is not conditioned by the valence of a verb or a predicate;
- 3) the attributes specifying the first and the second factors.<sup>39</sup>

The interest in structural transformation and its paradigm takes an important place in modern grammar studies. Such an attempt is explained by the fact that modern linguistics focuses on the dynamic

---

<sup>39</sup>Adams, R. L2 Tasks and orientation to form: A role for modality? // – New York: J.Benjamin Publishing Company, ITL: International Review of Applied Linguistics, – New York: J.Benjamin Publishing Company, – 2006. – p. 32.

side of language. Synchronous dynamics understanding the language as a process does not go against understanding synchronous static of language.

In the *third chapter* of the dissertation called *“The concept of linguistic model”*, the subjects related to the essence of linguistic models used in the modeling process of the language are investigated. In general, the word of *model* is derived from the Latin word “modulus”, which is understood as a *style, measure, and example*.

Every linguistic model that is familiar with Chomsky’s and his followers’ research directly links with syntactic structures associated with the creation of sentences and word combinations. According to N.Chomsky, it is subject to a particular syntactic pattern that fulfills the function of the model in constructing a sentence.<sup>40</sup>

However, in order to understand the role of the modeling and model in all these linguistic processes, it is important to give a general explanation of the model concept first. The model is a specially created object that holds the properties of a real object existing as a means of scientific understanding. Modeling is the process of creating and expressing the model. A specially created object during modeling is understood to be an object that is similar to the newest prototype and serves the image tool or predicts the behavior of the prototype.

In linguistic literature is noted: *“The language modeling patterns can be found in verbal and written form. For example, sea flags, Morse alphabet, telegraph, etc. can be shown as an initial example for the modeling. According to Yelmslev, a representative of the Prague School of Linguistics, light signals, Morse alphabet and similar modeling studies can benefit linguistics, because these structures, which are deprived of natural language complexity, appear in the form of primitive models”*.<sup>41</sup>

---

<sup>40</sup> Chomsky, N.A. Language and mind. / N.A.Chomsky. – Cambridge: Cambridge University Press, – 2006. – p. 241.

<sup>41</sup> Verdiyeva, Z.N. Linguistic problems. / Z.N.Verdiyeva, F.M.Aghayeva, M.M.Adilov. – Baku: “Maarif”, – 1982. – p. 132

Modeling is a universal method of science. The use of models depends not on the object being studied, but on the level of understanding it. In the widespread plan, modeling has positioning related to understanding methods such as observation and practice.

In some sources, it is called description of the text material emerged as a result of the generalization of facts of language model and some elements of information. In this sense, any dictionary and grammar can be regarded as a model of language.

A.Rajabli writes: “*Model conception is different from other concepts. It's important to point out a modeled object. If we compare the model, for example, with a sentence or scheme used for its description of the type, then the same sentence will be its original variant (source). Because language units have a clear sense of representation, investigation of sentence structure justifies the appeal to the modeling. Then the original is not just in this opinion, it will be an unexpected phenomenon in all the known opinions.*”<sup>42</sup>

The followings are taken into consideration when designing the model:

1. The identified facts which require clarification.
2. Suggesting hypothesis explaining those facts.
3. Implementing the facts in the form of predictive models.
4. Checking the model through experiments.

Speech activity models include *semantic* and *non-semantic* models. *Non-semantic model* intends pure syntactic models preferring grammar, and *semantic model* intends models that serve language carriers to understand sentences and build understandable sentences.

In terms of identifying the object of modeling, it is possible to add *analysis* and *synthesis* models to speech activity models. An infinite number of rules that allow you to analyze the infinite number of sentences in a given language are called an analysis model. Infinite number rules are called *analysis model* allowing to analyze an infinite number of appropriate sentences. Finite number rules are called *synthesis model* allowing to analyze an infinite number of correct sentences. There are also *generating models* having

---

<sup>42</sup> Rajabli, A.A. Linguistic methods. / A.A.Rajabli. – Baku: “Nurlan”, – 2003. – p. 146

intermediate positions between the analysis and synthesis models. Models serving the emergence of infinite expressions, establishing the infinite number of correct sentences of the given language and models that serve each of them to a specific structural character including the elements of the alphabet is called *generating models*.

Structural linguistics is one of the most promising linguistic trends against the comparative-historical method in the XIX-XX centuries.

Historical-comparative linguistics has learned the language from the historical point of view, attempted to find the attitude and similarity between native language, and analyze it. For such reasons, this linguistic trend could not have accurately investigated the language. The current language was studied in phonological and morphological levels, and the problem of syntax remains unresolved. Representatives of this linguistics have directed their research into historical aspect of language units, without taking into consideration the principle of language systemicity.

In the early days of its creation, transformation grammar was more inclined to descriptivism than generative grammar in American structuralism. Because, transformation linguistics accepts a number of conclusions of the descriptive analysis at the level of phonology and morphology.

Based on the “chain analysis” method Z.Harris came to conclusion that each sentence consists of a center and members with right-hand and left-hand connection. Both the center and the joining members create word chains, and those words are referred to different classes. If every word in the chain is replaced by the corresponding symbol of the class, then the chain model will be obtained. In order to compile syntactic models, the sentence structures need to be analyzed in the corresponding language first.<sup>43</sup>

Though structuralism, denies the traditional principles, all sources indicate that grammar is composed of two areas – morphology and syntax. Morphology describes the rules for the creation and use of parts of speech, and syntax describes the

---

<sup>43</sup> Harris, Z.S. Structural Linguistics. / Z.S.Harris. – Chicago: University of Chicago Press, – 1963. – p. 175.



structural and semantic features of word combinations and sentences. Syntax is a science that describes the principles and rules of the origin of sentences in language. In general, a term called linguistic level is commonly found in language theory. Phonology, morphology and syntactic levels together complete each other in a related manner in the creation of the sentence mechanism, the main information base of the language.

Grammar categories reflected in the models mainly are (noun), (verb), (preposition), (adverb), (adjective) and noun and verb combination created by them (NP and VP). Here N is indicator for (noun), V is indicator for (verb), P is indicator for (preposition), A is indicator for (adjective), and ADV is indicator for (adverb). The most important of the functional categories is the D category, which carries the determinant. D sometimes is shown as DET. determinants function before the nouns and provide their informative character. Here are some examples: 1. *The village store is closed.* 2. *This appalling behavior has got to stop.* 3. *That dog of yours is crazy.*

The other group of contributors is named quantifier, and is marked with Q. These are illustrated in the following examples. (a) *Most good comedians tell some bad jokes.* (b) *Many students have no money.* (c) *Every true Scotsman hates all Englishmen.* (d) *Each exercise contains several examples.*

There are auxiliary verbs in modern English, which is far from the lexical meaning expressed by the main verb, only expressing the grammatical meaning, playing a special role in forming time and style categories, which are marked as AUX. (a) *He has/had (gone)* (b) *She is/was (staying at home)* (c) *They are/were (taken away for questioning)* (d) *He really does/did (say a lot)* (e) *You can/could (help us)* (f) *They may/might (come back)* (g) *He will/would (get upset)* (h) *I shall/should (return)* (i) *You must (finish your assignment)* (j) *You ought (to apologies)*

Thus, in accordance with functional and lexical categories explained above and given below, models related to the syntactical structure of sentences and expressions in English is as follows:

N = noun; V = verb; A = adjective; ADV = adverb; P = preposition; D/DET = determiner; Q = quantifier; PRN = pronoun; T = tense-marker (e.g. auxiliary/infinitival *to*)

It can be seen by looking at the features of descriptive grammar that this new form of grammar is more interesting than the traditional form. These models include the followings:

- 1) Sentence      —————> NP + VP
- 2) NP            —————> T + N
- 3) VP            —————> verb + NP
- 4) T             —————> the
- 5) Noun          —————> man, ball, etc.
- 6) Verb          —————> take, hit, etc.

The explanation of these models can be explained with the sentence of *The girl bought the book.*

- NP + VP
- T + N + VP
- T + N + verb + NP
- The + N + verb + NP
- The + girl + verb + NP
- The + girl + bought + NP
- The + girl + bought + the + N
- The + girl + bought + the + book

In a simple sentence, complex structured construction such as two verbs constructions are also used. It is possible to distinguish several types of such structures On the basis of transformation, accordingly to differentiate several semi types of verbs.

In English two verbs constructions give a more effective analysis:

- 1. The mother made the child wake up early.
- 2. I want to write.
- 3. The grandma took her grandchild to walk a bit.

Nomination-type transformations indicate the conversion of sentences into noun combinations. At this time, transformation expresses the meaning such as executive action (actor-action), work on executive action (actor action thing acted upon), and the relation of possession.

For example:

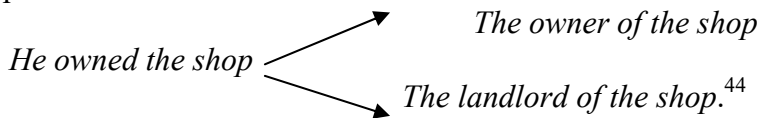
*The seagull shrieked.* → *The shriek(ing) of the seagull;*  
(actor-action)

Noun transformations mostly emerge from nuclear sentences in known case.

Nuclear sentences are mainly reflected in two types: basic verb and BE sentences. The sentences with V are in two types, transitive and intransitive. BE expresses its quality and condition, depending on the NP in the sentence.

Though nuclear sentences can form the basis for the noun transformation, but not all sentences can be transferred into nouns, because the conformity of meaning and words does not coincide during transformation.

Different images are created in N-transformations. For example:



In the first transformation the regular transformation is observed, and in the second transformation the replacement of similar meaningful words is observed.

The transformation procedures of the BE sentences are different from the structure of sentences where the main verb (V) is used. For example, “do” auxiliary verb is not used in structures such as T-A, T-Q, T-W, T-not. There are the singular and plural forms of BE appropriate to past and present. During transformation, the BE is removed from the content of syntactic unit and the NP is formed:

1) NP is A → TAN (T-modifier). The process is as follows. Removal of BE; Use of A between T and N, which is an integral part of NP. For example:

*The girl is pretty* → *the pretty girl*

*The man is kind* → *the kind man*

*The sea is rough* → *the rough sea*

---

<sup>44</sup> Chomsky, N.A. Syntactic structures. / N.A.Chomsky. – Berlin: Mouton de Gruyter, – 2002. – p. 97

2) NP is A structured sentences can also be transformed in another way:

NP is A → TN/A of NP; here in N/A model N is a noun emerged from A. For example:

*The task was difficult.* → *the difficulty of the task*

*The expedition was dangerous.* → *the danger of the expedition*

*The day was lovely.* → *the loveliness of the day*

*The man is wise.* → *the wisdom of the man*

Transformations with HAVE

V-HAVE is structurally different from other verbs. Verbs with HAVE are divided into the following classes:

1) In sentences showing ownership, possession:

*The man has a son; A dog has four legs.*

2) In sentences that can be replaced by the word "there" and meaning the possession:

*The room has three windows.* → *There are three windows in the room.*

*The boy has a book in his hand.* → *There is a book in the boy's hand.*

3) Sentences providing the same information and where the main verb means "capacity": *The cup has tea in it.* → *The cup contains tea.*

In **fourth Chapter** of the Dissertation called "**Invariant models**", invariant models of communicative types of simple sentences in English is investigated, the development models of sentence members are reviewed on the basis of fair language material. Firstly, the use features of *after*, *before*, *since* synchronics, their models used as preposition, conjunction, and adverb are analyzed following the dynamics of the change of those units, in particular, paying attention to time relations.

The study of the grammatical status of these syncretisms is of interest. Grammatical status of *after*, *before*, *since* lexemes remains uncertain so far. L. Skupchenko analyzing the syntactic models containing words *after*, *before* concluded that they do not have a function of conjunction, determination of *after*, *before*, *since* by using the syntactic models is really interesting, because it is

inextricably linked with the syntactic use of the grammatical meaning due to the lack of words and their lack of paradigm sequences.<sup>45</sup>

The dissertation analyzes 27 syntactic models of sentences, including words *after*, *before*. Let's pay attention to some of them:

After + Phr

I think it is wonderful to be happy after being married to the same man for so many years. → after that.

After + Ger

After eating Jane verb aslecp. — after that.

P<sub>str</sub> + after

After + S<sub>(elli)</sub>

It is safer to pay now. If you don't do it now you'll have to pay twice as much after. → a) you'll have to pay twice as much afterwards – is adverb; b) You'll have to pay twice as much after now is preposition.

S + after

S<sub>1</sub> + (after + S<sub>2(elli)</sub>)

We want these machines not the next year, not the year after, but now. → a) The year that will come afterwards – is adverb; b) the year after the next year - is preposition.

After + P<sub>str</sub>

After + S<sub>(elli)</sub>

After we had come back home we felt fine, and then after, we felt very happy. → a) and that afterwards we felt very happy is adverb; b) and then, after that, we felt very happy - is preposition.

P<sub>str</sub> + (D + after) <sub>phr</sub>

After + S<sub>(elli)</sub>

At first sight of her you felt a kind of shock of gratitude... and then in the next second forever after a kind of despair. → a) and forever afterwards is adverb; b) and forever after that second (moment) - is preposition.

---

<sup>45</sup> Skupchenko, L.N. The grammatical status of the prepositions after, before, since, till, and until in modern English: / Abstract of the Dissertation of Candidate Philological Sciences. – M.: Progress, – 1984. – p. 9

This chapter also analyzes the use models of semimodal verbs in English. Semimodal verbs such as *Shall*, *should*, *will*, *would*, *dare*, *need* have the ability to create an invariant variety in a variety of meanings. The 10 functional models where those semi-modal verbs were used being are reviewed.

*Shall* semi-modal verb is used for 1) obligatory or explicit command; 2) threat or warning; 3) to express the promise meanings:

- 1) *He shall go off tomorrow.*
- 2) *You shall never see me again.*
- 3) *No one shall come here without your entire consent.*

*Should* semi-modal verb as a result of its development, means new meaning – to advise unlike the semi-modal verb of *shall*:

*You should go to high school. You should never look at one woman when you are talking to another one.*

*Will (would)* semi-modal verb means 1) wish or desire; 2) absolute, stubborn, insistent; 3) kind, polite demand:

- 1) *I will make well.*
- 2) *I will tell you nothing at all.*
- 3) *Will you have a cigarette? asked Mr. Strickland.*

Realized models of Communicative types of simple sentences, development models of different sentence members are widely analyzed in this chapter.

In the ***fifth chapter*** of the Dissertation called ***“Variative Nature of Speech Intonation”***, the issue of constancy and variability in the experimental phonetic analysis and simple sentence level has been set.

Touching on the referring to the issue on phonemic level in English, D.J ones used the term “diafonic change” of phonemes instead of the term “variativity”<sup>46</sup>; At the end of the 70s of the last century G.P.Torsuyev studied the issue of constancy and variability in phonetic structure of the English phoneme. In his opinion, the constancy and variability are one of the main features of the language structure and depend on its inner nature and purpose, the language without them can neither exist nor develop. Constancy and variability are demonstrated in all aspects and levels of the language in accordance with the specifications of language units.

---

<sup>46</sup> Jones, D.P. An outline of English phonetics. / D.P.Jones. – Cambridge: Cambridge University Press, – 1957. – p. 57.

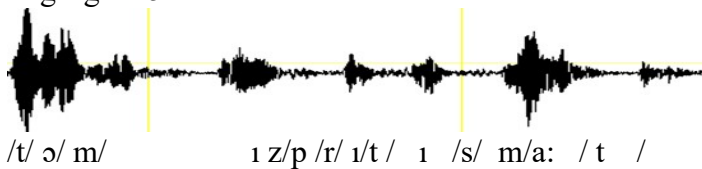
G.P.Torsuyev speaks about several functions of variability. Among these, his opinion about the distinctive function or a stylized function of variability creates a serious implication for the issue to be applied at the sentence intonation level.<sup>47</sup>

The syntactic and intonation optionality of simple sentences have been studied on experiments. The sentences undergone the experiment were selected from English sources. The material selected for the experiment was filmed by two speakers. Speakers are:

1) John Thomas, 64, born in Aberdeen, has a higher education, and Standard English pronunciation. He works at a company called Swift Engineering. 2) Graham Quin, 67, born in Liverpool follows Standard English pronunciation. He works at a company called Petroplan.

The speakers were not informed about the purpose of the experiment. They felt relieved, as if they were part of the ordinary talk.

Then, the tape recordings were sounded on the computer and analyzed in the PRAAT program. According to the program requirements, an experimental language material is played, its analysis is carried out on three parameters. These parameters include the movement of the sound ton, its tempo and intensity. For example, /<sup>ˈ</sup>Tom iz/ <sup>ˈ</sup>pri:tɪ <sup>\</sup>smɑ:t// Oscillogram and spectrum of (Tom is pretty smart) sentence shows the following three parameters in the following figure 5.1.:



**a) Oscillogram of the sentence**

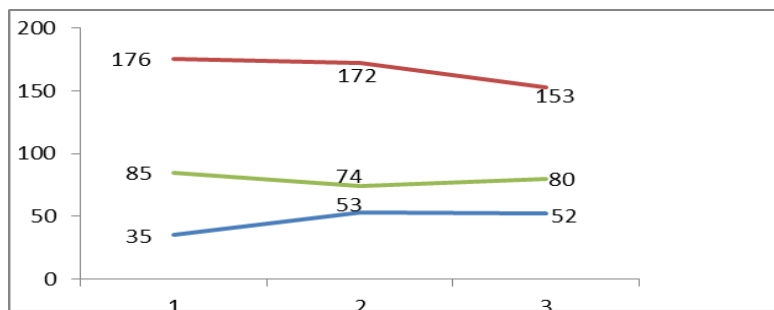
<sup>47</sup> Torsuyev, G.P. Phonetics of the English language. / G.P.Torsuyev. – M.: Publishing house of literature in foreign languages, – 1950. – p. 4.



**b) Spectrum of the sentence**

**Figure 5.1.**

In this sentence, the tone movements begin at 176 hs and gradually moves towards the descent. This is natural, because the sentence is pronounced by terminal intonation.<sup>48</sup> Two other parameters of the intensity of the contour are formed accordingly, tone movements in sentence provides weakening of intensity and delay of time having subdued intensity and time.



**Graphic 5.1. The motions of tone (red), intensity (green) and time (blue) in the sentence**

As it can be seen from the Graphic 1, the preceding sentence begins with the strong tone and intensity, however there is a smaller strength toward the end in intensity and time.

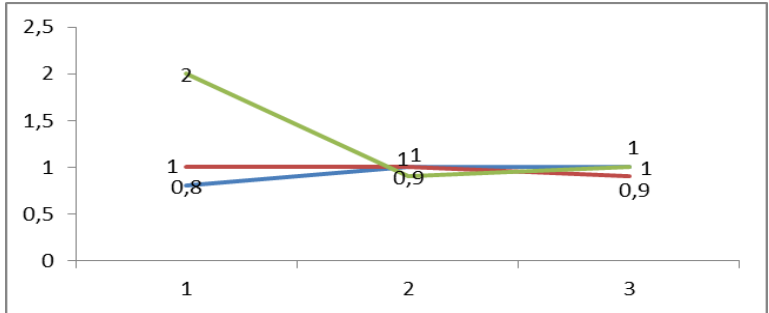
It is known that absolute figures can be of a random character. To avoid this, the average-relative numbers allows for more accurate results. The intermediate-relative figure is taken by dividing the price by an average price. For example, if the absolute value of the / o / vowel is 176 hs for the tone, its average value is 167 hs.

In this way, we get figures on the parameters. So after that, we will calculate all the parameters at moderate figures. Thus, the

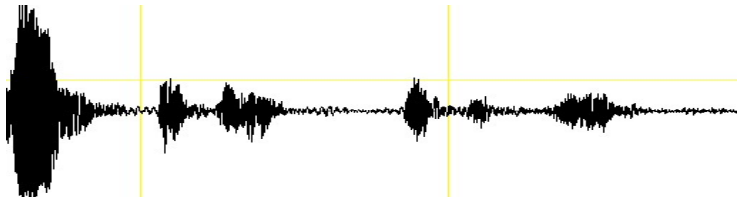
<sup>48</sup> Veysally, F.Y. Pickwicked works. [in 2 volumes]. / F.Y.Veysally. – Baku: “Mutarjim”, – 2014. – II vol., – p. 64.



movement of the tone is not so noticeable. However, in the other two parameters, serious changes are observed at the beginning of the sentence.



**Graphic 5.2.** /'tɒm ɪz 'prɪtɪ ʌ smɑ:t // (Tom is pretty smart)



/tɒ m / /'i z n t / /'p rɪ t ɪ / ʌ s mɑ: t / (Tom is not pretty smart)

**a) Oscillogram of the sentence**

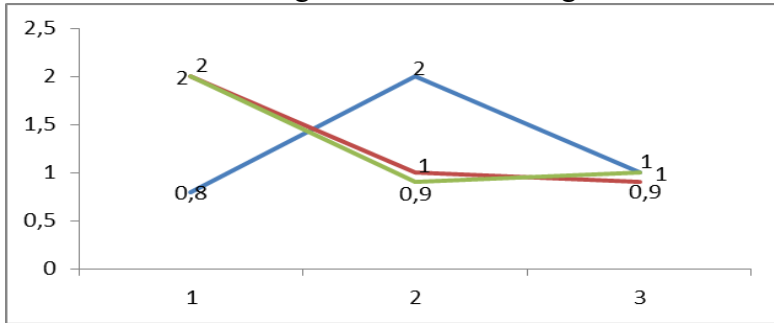


**b) Spectrum of the sentence**

**Figure 5.2.**

If we analyze the behavior of the parameter in the pronunciation of the sentence in the negative variant, we will see another picture. /tɒ m / /'i z n t / /'p rɪ t ɪ / ʌ s mɑ: t / When analyzing the sentence (Tom is not pretty smart) by those parameters, it becomes clear that the intensity is in the middle of the sentence. The sum of the tone's movements and time settings is at the

beginning of the sentence. However, as in the affirmative sentence, the parameters are weakening at the end in the negative form.

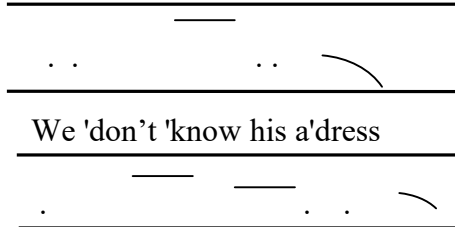


**Graphic 5.3. / 'tom 'iznt 'prɪtɪ ,smɑ:t // (Tom isn't pretty smart)**

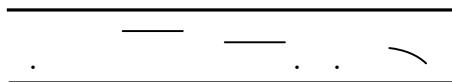
The simple declarative sentence displays the affirmative and negative fact. These sentences are pronounced with falling tone (intonation). They consist of one or more meaning groups. Usually, long sentences are divided into several meaning groups. The number of meaning groups in the sentence depends on syntactic meaning, grammatical structure, and pronunciation. The number of meaning groups in the rapid speech decreases reduces, but in slower speech their number increases:

1. In declarative sentences which are in the affirmative and negative form, there is an ending with falling tone consisting a group of meaning.

Example: He is ' always , ready



We 'don't 'know his a'dress



Summarizing the above mentioned it should be noted that the variability can show itself at all levels of language.

A study on the invariant models and variability of simple sentences in English allows the following **Conclusions**:

1. During the Middle and Early English Period changes in morphological structure greatly influencing the language syntax, led

to violation of inflection in medium English that is characteristic for ancient English, as a result, to the reduction of the role of consensus and management in medium English as an expression mean for syntactic relationships in ancient English, to the emergence of new means of expression (approach and vocabulary between words).

2. Medium and Early New English, the functional load of the word sequence in the sentence has also changed because of neutralization or decline of endings, the connection between the words are given by prepositions and word sequence. Unlike Ancient English, the position of each sentence member in the sentence begins to be stable in Middle English.

3. Compared with Modern English during the Middle English, reason for word order in simple sentence not being sufficiently stable is linked to the continuation of the formation of the grammar system of the language at that time and breaks occurred in writing tradition after the Norman occupation. The process of stabilization of word sequence which has been started from the beginning of Early English continued until XVI-XVII centuries.

4. The synthesis of the ancient English language is gradually replaced by analytics as a result of changes in grammatical categories. Although the first signs of analytics have started to show itself in Medium English, this event has become an important feature of English grammar by developing over time.

5. Formation of a structure of the simple sentence in English, as well as its constituent elements, is a complex process. The structure of the simple sentence in different historical periods got even more complicated. This was due to the development of syntactic or predictive structures taken as a complex member of the sentence. Predictive constructions include "Nominative case + infinitive composition", "Objective case + infinitive composition", participle, gerund and "for ... to" infinitive composition. Though, such predictive constructions are used in certain groups of verbs in the ancient English, these constructions began to be processed with verbs in different meanings in the end of Middle English and early new English. If we summarize, the followings play an important role in the formation of structured-semantic components of a simple

sentence: 1) syntactic position of sentence components; 2) categorical-lexical attitude of this position; 3) interrelation of lexical and syntactic semantics.

6. In the history of development of English language in simple sentence models structural-semantic expansion is realized, secondary members are formed along with the evolution of the subject-predicate relationship. Comparison of invariant models of the simple sentence gives grounds to say that the objective approach, which is closer to the predicativity, has emerged after that.

Object relationships define the gnesological basis of semio-grammatical associations between a predicate and a complement in simple sentence structure. In simple sentence in structural-semantic expansion attributive relation is formed after subject-predicate and object relations, which is characterized by the nominative expression of the relationship between the object and the subject in English. This phenomenon in structural-semantic expansion of a simple sentence in English can be considered a typological phenomenon, because predicative, object, attributive relations are historically followed by each other in all languages.

7. Predictive relationships with subject-object and predicate categories play crucial role in identifying the essence of sentence members in structural types of simple sentences in English. With respect to simple sentence syntax "Subject//subject", "Predicate//predicate", "object/object", "predicativity", "optionality", "variation" and so on. In the use of generally accepted terms is to some extent conditionally characterized by the determination of the essence of their insights on the grammatical signs of the English language.

8. There are some changes in the structure of SP, SPO and SPC models of simple sentences in medium and early English. SPC sentence model was the model that most exposed to changes. In contrast to the SPC model of simple sentence in ancient English, the content of that model in medium and early English is enriched with new syntactic units, such as conjunctive verbs.

9. The main purpose of transformation analysis belonging to American Structuralism and emerging a new description of the

language was synthesizing. Transformational linguistics does not differ much from descriptive linguistics because of the acceptance of the results of descriptive analysis in the phonology and morphological levels.

10. Four types of operations take place in the Transformational Analysis Rules: a) permutation (replacement of units), b) substitution (substitution of one unit by another), c) adjunction (addition), d) ellipsis (unit removal).

11. In the study, transformation of the declarative sentence into general and special interrogative sentences, transformation of the declarative sentence into transitive and intransitive verbs, transformation of known verbs into unknown verbs, transformation rules in sentences having BE, HAVE, and nomenclature (substantivization) transformations constitute the basis of structural linguistics.

12. In the dissertation, materials on analysis of simple sentence based on generative models create basis for coming such a conclusion that, constitutive grammar does not constitute a sentence, but it contains some rules for making sentences. In fact, constitutive grammar is nothing but a traditional grammar.

13. Transformational and generative grammar, including descriptive linguistics, illustrating the syntactic level of the sentence model, facilitates the study of the content of the sentence and its organizing units.

14. Variativity operates on all language levels as one of the natural special features of language system. Intonational variability of language units is always considered in proportion to the concept of their constancy (such as variant and invariant relationships). Intonational variability helps to solve variability in language problem. Constancy and variability are considered to be the main features of the language structure. The language without them can neither exist nor develop. Constancy and variability are manifested in accordance with the specifications of language units at all aspects and levels of language.

15. When it comes to the issue in sentence intonation level, it is clearly observed that, the intonation variability in English has both

relevant and non-relevant roles. In the functional plan sentence intonation is capable of creating a number of semantic differences in structural-syntactic units thanks to its flexible variability features. The variation in the intonation contour in the communication process serves to determine the communicative type of sentence. In other words, through a variety of intonation variability, a communicative type is transmitted to another (for example, "you're all right?" affirmative form used daily in English conversation receives an interrogative character in intonation form). Though simple declarative sentence with the same syntactic structure within the context of intonative variability called the categoric, the definitive in the explicit plan, it is called sentence non-classified incompleteness, dissatisfaction, doubts and so on. able to express semantic shades implicit plan.

16. Variativity feature of sentence intonation serves to express mainly syntactic-semantic meanings of the communicative types of sentence in the normative (non-emphatic) speech. However during the empathic speech, very rich meanings of various sentence and expressions, expressive-emotional, logical-predictive, and so on. functions is conditioned by more vigorous and intensive events occurring in the intonation variation. Strength Emphasis is used to convey simple transposition sentences in a more convincing way concerning specific contextual-situational conditions. It is formed by expanding the range of sentences and strengthening sentence accents. The definition of a logical precision center in simple declarative sentences is achieved using a declining tonal variant of the logical accent in the sentence.

The main content of the study was reflected in the following publications of the author:

1. The intonation variability of simple sentences in modern English // – Baku: AUL, Foreign languages in Azerbaijan, – 2013. – №2, – p.53-56.
2. Analysis of variability in complex syntactic units in modern English // – Baku:– Foreign languages in Azerbaijan, – 2014. – № 1, – p.17-21

3. Features of variability // – Baku: Science and education. Philology issues, – 2014. – №4, – p.245-250.
4. Innovative Methods in Translation Studies // Actual Problems of Foreign Languages Teaching. – Baku: – 7-8 May, – 2014. – p.324-325.
5. About the problem of variability in foreign linguistics // – Baku: Science and education, Philology issues, – 2015. – №3, – p.126-132.
6. Variativities that occurred in sentence members and their expression means // – Baku: Science and education, Philology issues, – 2015. – № 6, – p.218-225.
7. About the problem of variability in foreign linguistics // Actual Problems of Foreign Languages Teaching. – Baku: – 4-5 May, – 2015. – p.27-29.
8. Variativity in different systematic languages // – Baku: Baku Slavic University, Actual problems of studying of humanitarian sciences, – 2015. – № 2, – p. 9-13.
9. Intrastructural variability at different levels of the language // – Poltava: Poltava National Pedagogical University named after V.T.Korolenko. Philological science. – 2015. – Issue 24, – Part 2, – p. 73-77.
10. The problem of sentence in syntax // – Baku: ANAS, Institute of Linguistics named after Nasimi, “Investigations”, – 2015. – №2 – p.66-72.
11. Intonativ variety of Simple Declarative Sentences in the English language // – Canada: International Journal of English Linguistics: Canadian Center of Science and Education. (Journal Impact Factor), – October, – 2015. – Vol.5, – №5, – p.164-170.
12. A simple, concise sentence in modern English // – Baku: Baku Slavic University, Tagiyev’s readings, – 2016. – №1, – p.84-88.
13. Structural features of simple sentence in modern English // – Baku: Baku State University, Language and Literature. International scientific-theoretical journal, – 2016. – №1 (97), – p.12-14.

14. Variativity creation features of word order in Modern English // – Baku: Ministry of Education of the Republic of Azerbaijan, Baku Girls University, Scientific works, – 2016. – №1 (25), – p.23-28.
15. Heydar Aliyev as a person who turns the whole Caucasus into a space where peace is established // International scientific conference, multicultural and tolerant values in the heritage of the National Leader Heydar Aliyev. – Baku: – 3-5, May, – 2016. – I part, – p.65-68.
16. Variativity creation features of adverbs in simple sentences // Actual problems of foreign languages teaching, Republican scientific-practical conference. Ministry of Education of the Republic of Azerbaijan. – Baku: – 5-6 May, – 2016. – p.57-58.
17. Invariant models of simple sentences in modern English // Ganja: Ganja State University, Scientific news, Ministry of Education of the Republic of Azerbaijan, – 2016. – №2, – p.122-126.
18. About the principle of language modeling // – Baku: Baku State University, Language and literature, – 2016. – №2 (98), – p.51-53.
19. The Linguistic Variable // I.G. ES. International Journal of Economics and Society. (Journal Impact Factor), – July, – 2016. – Volume 2, – Issue 6, – p.39-44.
20. Derivative models in simple sentences in English // – Tbilisi: Georgian Technical University, Ganatleba, – 2016. – №2 (16), – p.60-64.
21. Elliptic sentences in modern English // Baku: Pedagogical University news, – 2016. Vol. 64, – №1, – p.23-29.
22. Development ways of multiculturalism in Azerbaijan // International conference. – Baku: – 8-9 September, – 2016. – p.276-280.
23. Role of transformation analysis method in determining variativity // AUL, International conference, Ministry of Education of Russia, EA Philology issues, – Baku: – 20-21 October, – 2016. – p.7-9.
24. Constant and variativity in the phonetic system of the language and intonation structure // Baku: Baku Slavic University,



- Scientific works, Language and literature series, – 2016. – №2, – p.27-31.
25. Variativity of incentive applications // Minsk: Belarusian State University, – 2016. – Issue VII, – p.40.
  26. Structural-semantic variativity of simple sentences. Monograph. / – Baku: Science and Education, Institute of Linguistics named after Nasimi of ANAS, – 2016. –188 p.
  27. Scientific analysis of variativity // – Baku: AUL, Language and literature, – 2017. – Volume 8, – №1, – p.26-31.
  28. Sentence members and variations in their expression means // International scientific-practical conference, Ministry of Education of the Republic of Azerbaijan, Baku Business University, Baku: – 21 April, – 2017. – p.17-19.
  29. The variability in English // International Conference “Global Science and Innovations”. (Journal Impact Factor), – USA, Chicago: – 1<sup>st</sup> – 2<sup>nd</sup> March, – 2017. – p.36-46.
  30. Role of word-sentence in formation of variativity // – Baku: Baku Slavic University. Tagiyev’s readings, Ministry of Education of the Republic of Azerbaijan, – 2017. №7, – p.168-174.
  31. Variations occurring in communicative types of simple sentences in middle and early English language // – Baku: Baku State University, Language and literature. International scientific-theoretical journal, – 2017. – № 2(102), – p.95-98.
  32. Studies of invariant models in modern English // – Baku: Institute of Linguistics named after Nasimi of ANAS. Investigations, – 2017. –№2, – p.70-76.
  33. Syntactic Derivation // – Baku: Baku Eurasian University, Scientific-Theoretical Journal, – 2017. – Volume 6, – p.242-248.
  34. The role of Prosody and suprasegmental speech elements in variativity // – Baku: AUL, “Language and literature”, – 2017. – Volume 8, – №3, – p.27-35.
  35. Language variations and invariants of Simple sentence // –USA, Milton Studies. (Tomson Reuter), – 2017. – Volume 60, – Issue I, – p. 31-46.

36. *Lingua variazione E-invarianti Del Semplice frase // – Italy*, volume XX-IX. Fascic 1, – 2018, Indexed by Thomson Reuters Emerging Citation AHCI, Impact, 1.037, –p 86-98.
37. *The functions of the intonation and its making variability // – Baki: Baki State University, Language and Literature, International Scientific and theoretical Journal*, – 2019. No 2 (110), – p.79-82
38. *The Language Variation of the Linguistic Invariants // International Journal of Advanced Research (IJAR)*, July, 2019. N7(7), – p. 84-91.
39. *The grammatical categories of the Variability // Science and Education. International Scientific Conference*, – Penza, – 2020. – p.147-150

The defense will be held on \_\_\_\_ \_\_\_\_\_ at \_\_\_\_ at the meeting of the Dissertation council ED 2.12 of Supreme Attestation Commission under the President of the Republic of Azerbaijan operating at Azerbaijan University of Languages.

Address: AZ 1014, Baku, Rashid Behbudov Street, 134.

Dissertation is accessible at the Azerbaijan University of Languages Library.

Electronic versions of dissertation and its abstract are available on the official website of the Azerbaijan University of Languages.

Abstract was sent to the required addresses on “ \_\_\_\_ ” \_\_\_\_\_ 2021

Signed for print: 21.04.2021

Paper format: 60x84 1/16

Volume: 84423 characters

Number of hard copies: 20